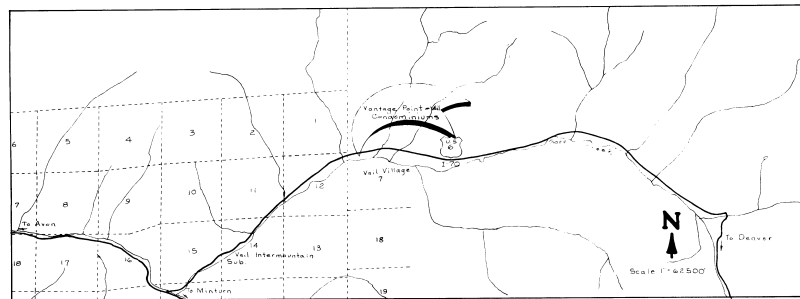
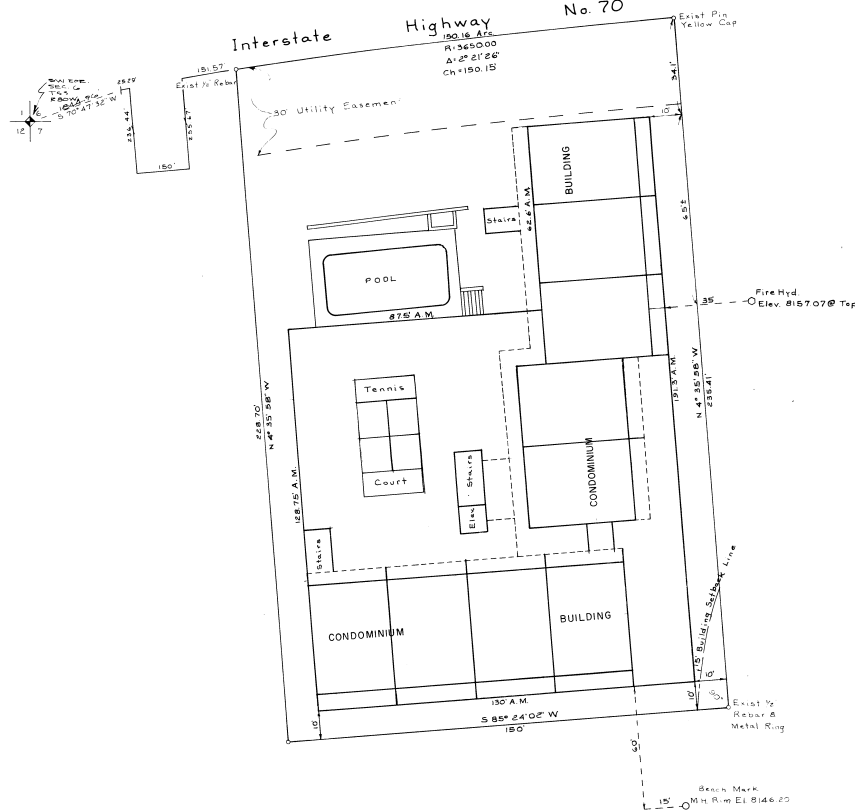


CONDOMINIUM MAP OF VANTAGE POINT - VAIL CONDOMINIUMS VAIL / LIONSHEAD COLORADO



OWNERS CERTIFICATE

The Declarant, Joseph L. Levin being the owner of the herein described real property hereby certify that this map of Vantage Point-Vail Condominiums has been prepared pursuant to the purposes stated in the Declaration recorded 25 July 1972, in Book 224 Page 867 of the records, of the Clerk and Recorder of Eagle County, Colorado.

BY Joseph L. Levin
Joseph L. Levin

ACKNOWLEDGEMENTS

STATE OF COLORADO
CITY AND COUNTY OF DENVER

The foregoing owners certificate was acknowledged before me this 16th day of February, 1973
by Joseph L. Levin.

Witness my hand and official seal this 16th day of February, A. D. 1973

My Commission Expires September 14, 1975

BY James L. Cunningham
Notary Public

SURVEYOR'S CERTIFICATE

I, Willis B. Comer, being a registered Land Surveyor in the State of Colorado do hereby certify that this plot of Vantage Point-Vail Condominiums showing the survey with buildings and improvements, unit designations, dimensions and elevations accurately depicts the layout measurements, and locations of all the improvements on a parcel of land situated on and being a part of Lot 2, in Block 1, plot of Vail/Lionshead, First Filing, Section 6 and 7, Township 5 South, Range 80 West of the 6th Principal Meridian, more particularly described as follows:

A Parcel of land lying in lot 2, Block 1, Vail/Lionshead, First Filing, a subdivision in the Town of Vail, County of Eagle, Colorado, described as follows:

Beginning at the Northwest corner of said lot 2, said point being on the South Right-of-Way line of Interstate Highway No. 70; thence Easterly along said Right-of-Way line 150.16 feet along the arc of a 3,650.00 foot radius curve to the right whose central angle is 2° 21' 26" and whose long chord bears N 82° 50' 19" E 150.15 feet, to the Northeast corner of said Lot 2; thence along the East line of said Lot 2, S 4° 35' 58" E, a distance of 235.41 feet to a point 40.00 feet from the Southeast corner of said Lot 2; thence parallel with the South line of said Lot 2, S 85° 24' 02" W, a distance of 150.00 feet, to a point on the West line of said Lot 2; thence along said West line, N 4° 35' 58" W, a distance of 228.70 feet to the point of beginning.

Together with a non-exclusive easement for the right of ingress and egress over Tract "E", Vail/Lionshead, First Filing, as more specifically referred to in paragraph 2.2.5. of the Protective Covenants of Vail/Lionshead, First Filing recorded on 18 May 1970 in Book 217 at Page 675, as amended by instrument recorded on 15 October 1970 in Book 218 at Page 899, in the records of the Clerk and Recorder of Eagle County, Colorado. This survey was checked after substantial completion of the building.

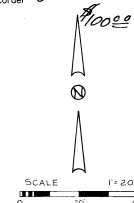
Willis B. Comer
Willis B. Comer, L.S.
Colo. Reg. No. 9713

RECORDER'S CERTIFICATE

This condominium map was filed for record in the office of the County Clerk and Recorder of Eagle County, Colorado on 17th M of the 23rd day of February, A. D. 1973, in case 2, Drawer V, Reception No. 123718, also recorded Book 227, Page 591

BY Marshall R. Berg
County Clerk and Recorder

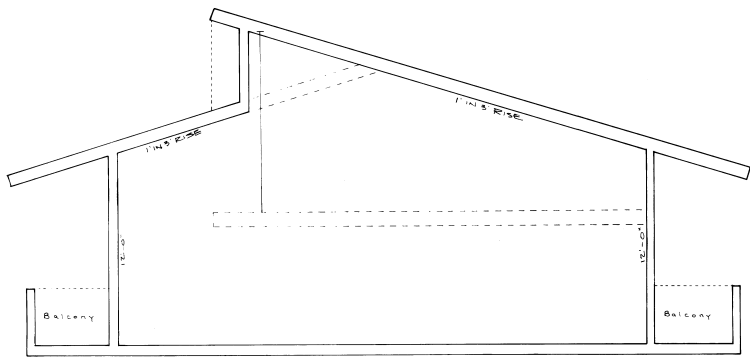
NOTE: The LIMITED COMMON ELEMENTS as defined in the declaration of Vantage Point-Vail Condominiums recorded in Book 224 at Page 867, Eagle County records, are balconies appurtenant to the units as set forth on the floor plans attached as sheets 5 through 10 of this condominium map.
"L.C.E." used on said floor plan means LIMITED COMMON ELEMENTS. The use of the elevator between the 5th and 6th floor shall also be a LIMITED COMMON ELEMENT appurtenant only to the unit on the 6th floor, unit 601.



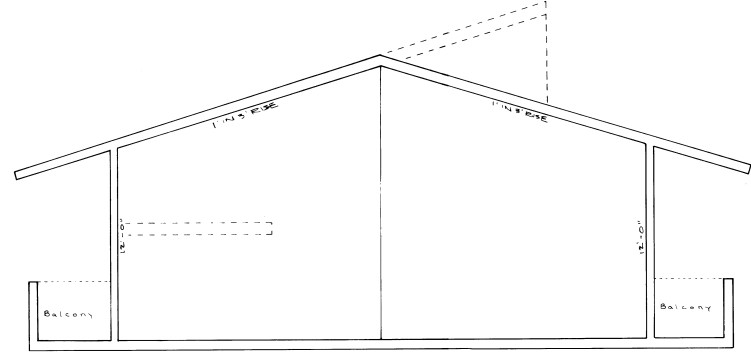
Wm. H. Burgwin & Associate Inc. 723 Delaware Street, Denver, Colorado 80201			
SCALE 1" = 20'	SHEET NUMBER 1 OF 10	DRAWN BY B.C.M.	
DATE 1-11-73	APPROVED BY		
VANTAGE POINT-VAIL CONDOMINIUMS VAIL/LIONSHEAD COLORADO			
CONDOMINIUM MAP			DRAWING NUMBER 70243

1973
(Vail/Lionshead, Colo.) Map of Vantage Point-Vail Condominiums

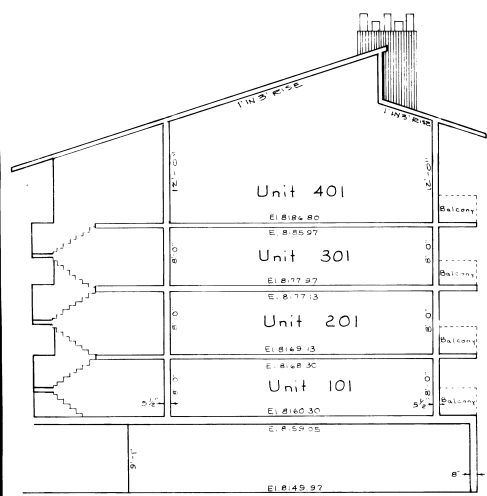
CONDOMINIUM MAP OF
VANTAGE POINT - VAIL CONDOMINIUMS
 VAIL / LIONSHEAD COLORADO



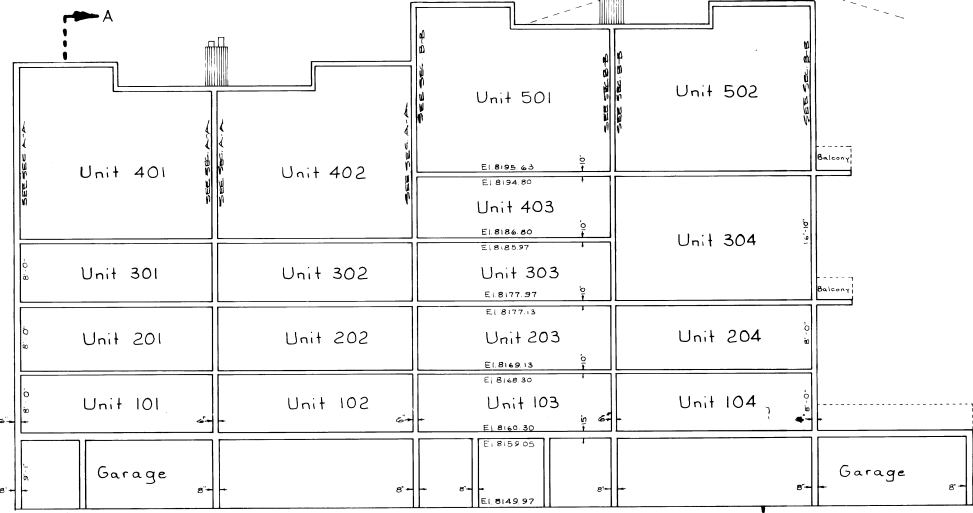
Section Typ Loft Unit



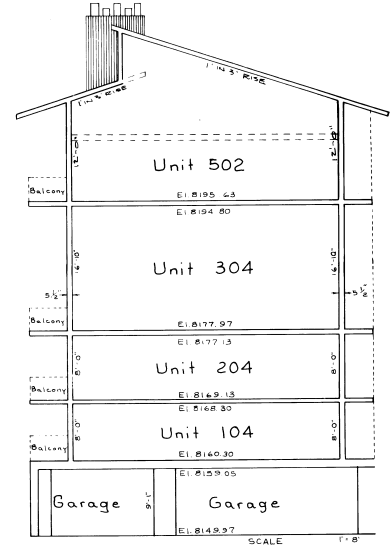
Typical 2L Loft Unit Section



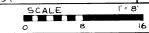
Section A-A



SOUTH



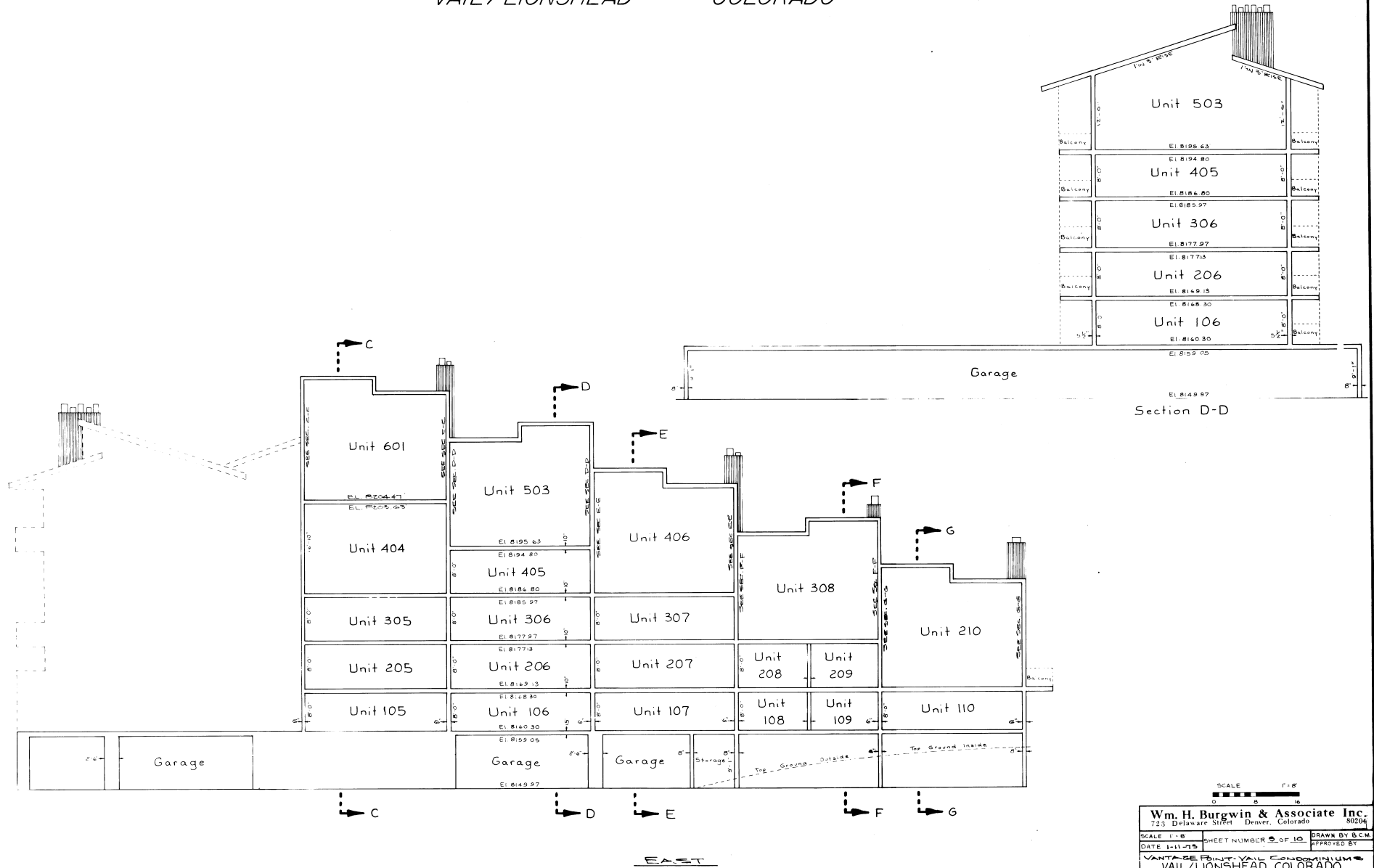
Section B-B



Wm. H. Burgwin & Associate Inc. 723 Delaware Street Denver, Colorado 80202			
SCALE 1" = 8'	SHEET NUMBER 2 OF 10	DRAWN BY BCM	
DATE 1-11-75	CHECKED BY		DATE
VANTAGE POINT - VAIL CONDOMINIUMS VAIL / LIONSHEAD COLORADO			
CONDOMINIUM MAP		DRAWING NUMBER 70243	

123718

CONDOMINIUM MAP OF
VANTAGE POINT - VAIL CONDOMINIUMS
 VAIL / LIONSHEAD COLORADO



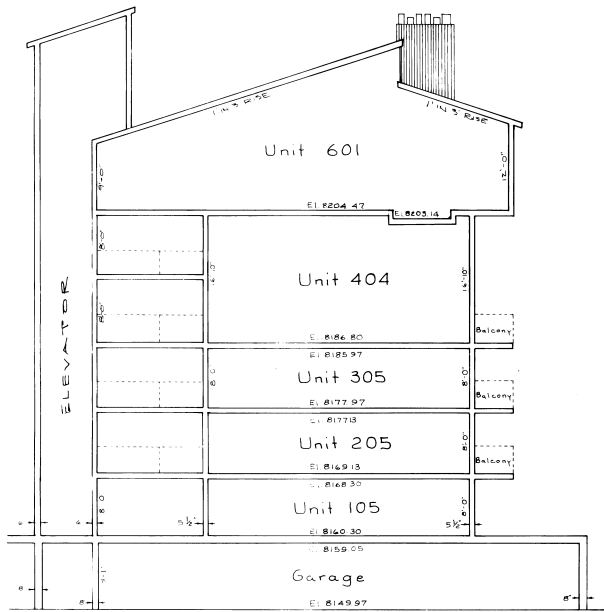
SCALE 1" = 8'

0 5 10

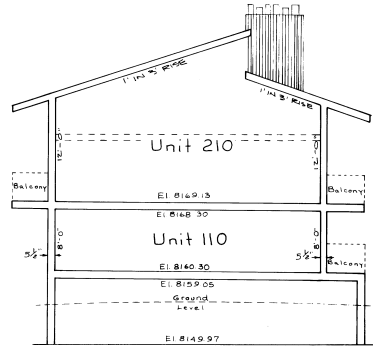
Wm. H. Burgwin & Associate Inc. 723 Delaware Street Denver, Colorado 80204	
SCALE 1" = 8'	DRAWN BY B.C.M.
DATE 1-11-73	APPROVED BY
VANTAGE POINT - VAIL CONDOMINIUMS VAIL / LIONSHEAD COLORADO	
CONDOMINIUM MAP	DRAWING NUMBER 70243

123218

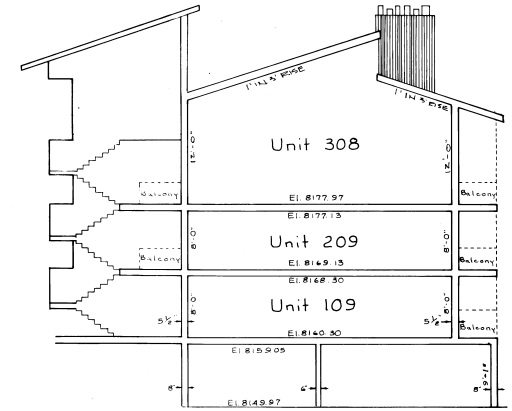
CONDOMINIUM MAP OF
VANTAGE POINT - VAIL CONDOMINIUMS
 VAIL / LIONSHEAD COLORADO



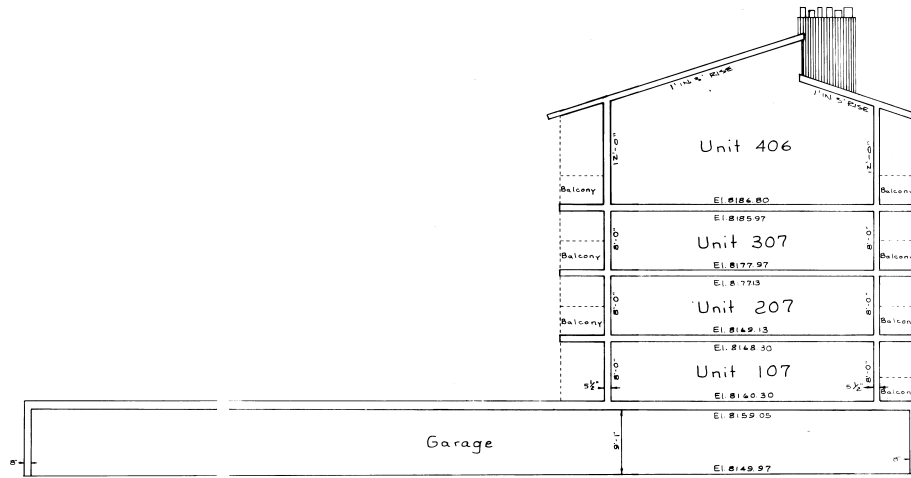
Section C-C



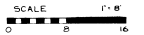
Section G-G



Section F-F



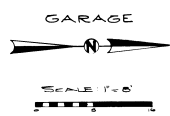
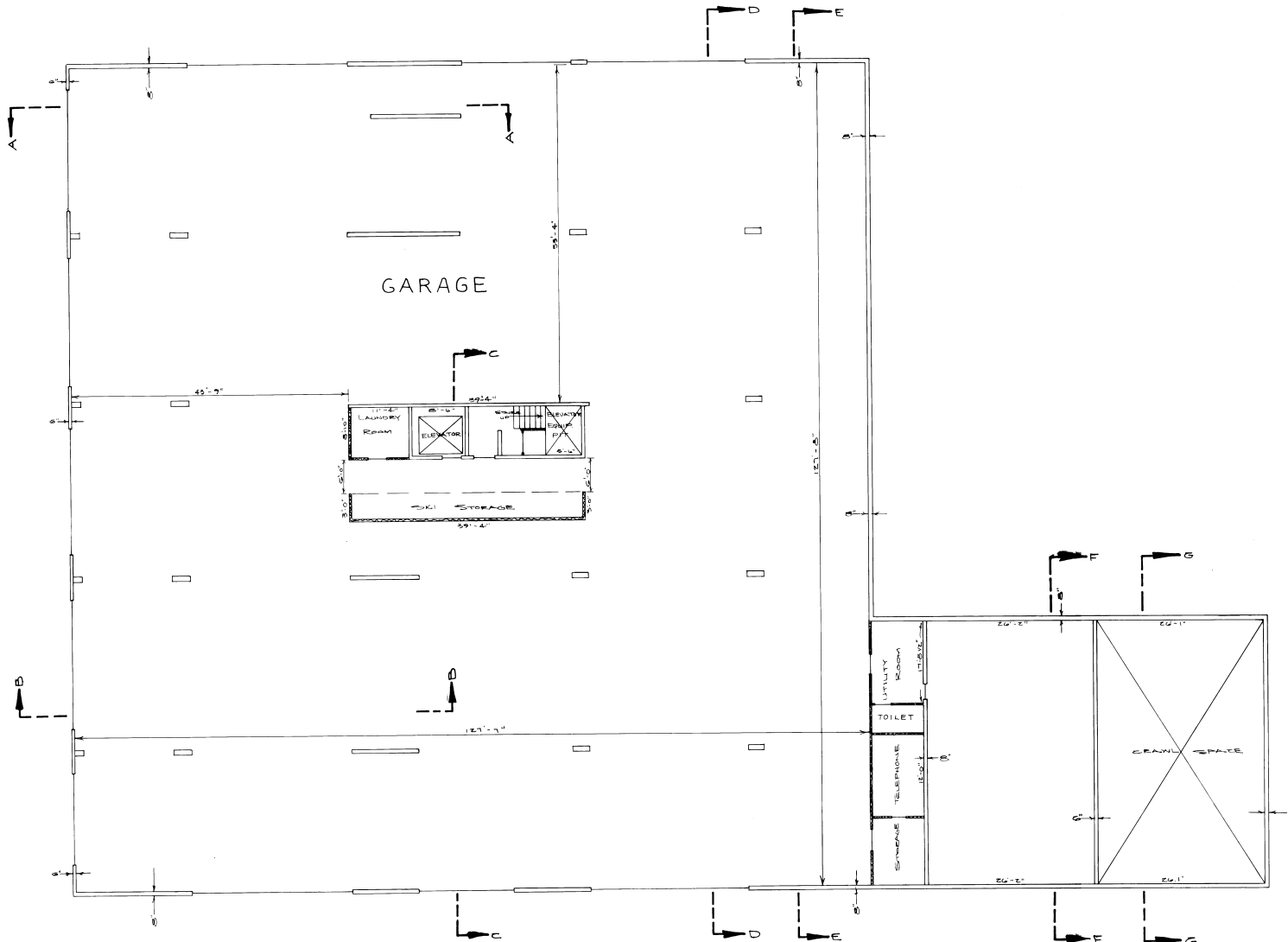
Section E-E



Wm. H. Burgwin & Associate Inc.		
723 Delaware Street Denver, Colorado 80204		
SCALE: 1" = 8'	SHEET NUMBER: 4 OF 10	DRAWN BY: S.C.M.
DATE: 1-11-78		APPROVED BY:
VANTAGE POINT - VAIL CONDOMINIUMS VAIL / LIONSHEAD COLORADO		
CONDOMINIUM MAP		DRAWING NUMBER: 70243

123218

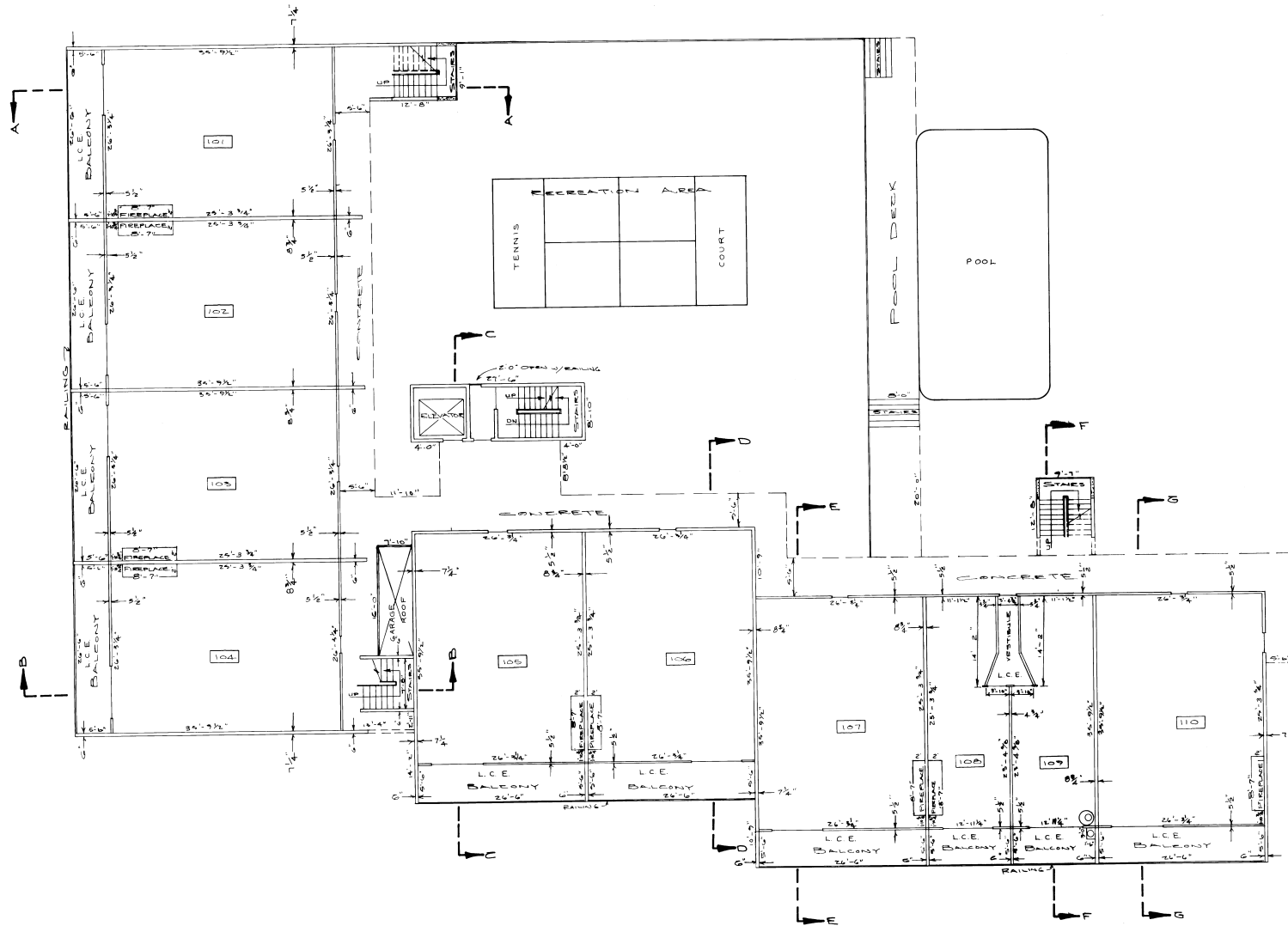
CONDOMINIUM MAP OF
VANTAGE POINT - VAIL CONDOMINIUMS
 VAIL / LIONSHEAD COLORADO



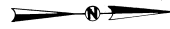
Wm. H. Burgwin & Associate Inc.			
723 Delaware Street Denver, Colorado 80204			
SCALE: 1"=8'	SHEET NUMBER 5 OF 10	DRAWN BY: D.E.S.	CHECKED BY:
DATE: 1-11-78	VANTAGE POINT - VAIL CONDOMINIUMS		
VAIL / LIONSHEAD COLORADO			
CONDOMINIUM MAP			DRAWING NUMBER 1024-S

1232/P

CONDOMINIUM MAP OF
VANTAGE POINT - VAIL CONDOMINIUMS
 VAIL / LIONSHEAD COLORADO



FIRST LEVEL

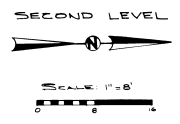
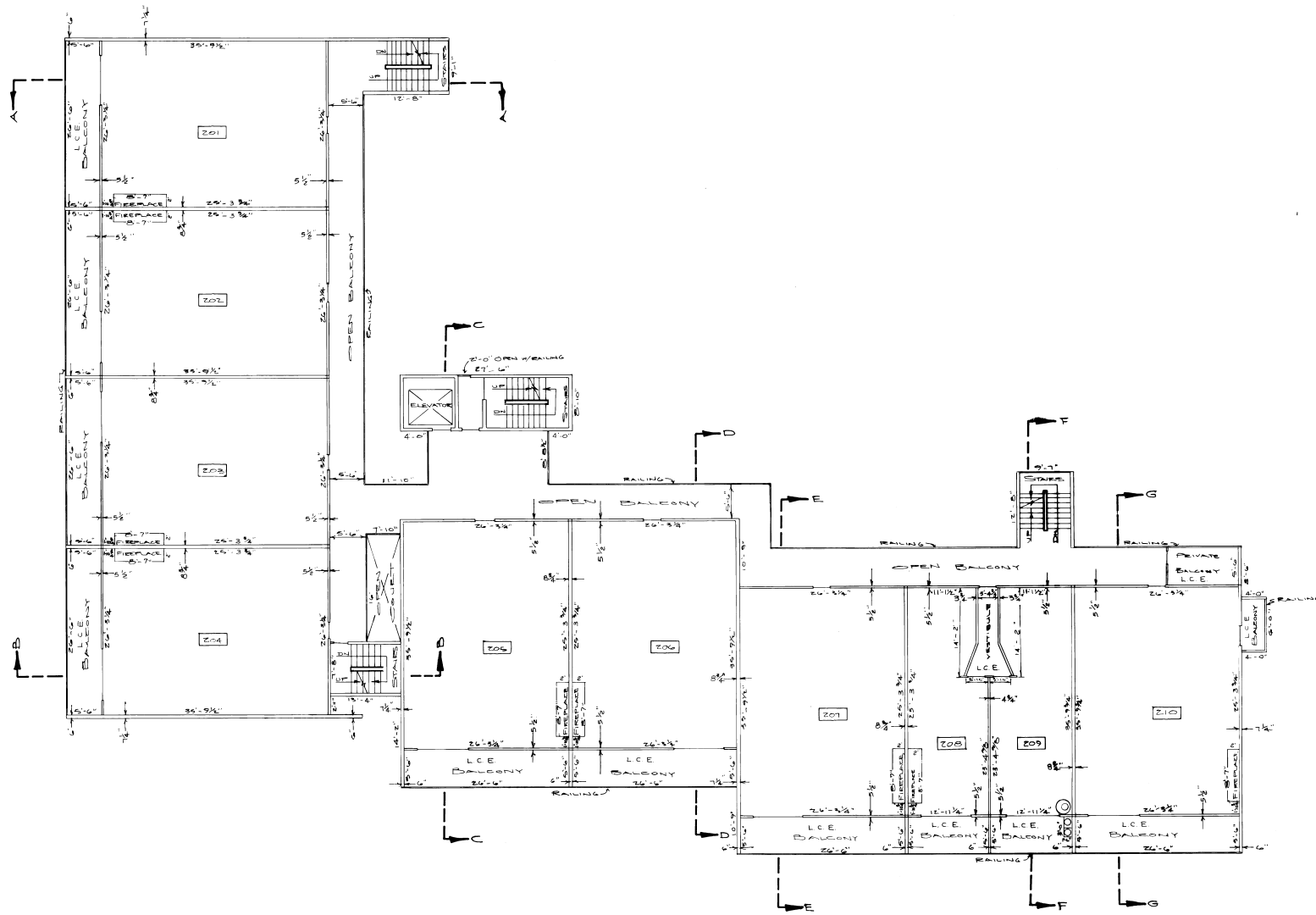


SCALE 1"=8'

Wm. H. Burgwin & Associate Inc. 723 Delaware Street Denver, Colorado 80204	
SCALE 1"=8'	SHEET NUMBER 0010
DATE 1-11-75	CONTRACT NO. 75-0010
VANTAGE POINT-VAIL CONDOMINIUMS VAIL/LIONSHEAD COLORADO	
CONDOMINIUM MAP	75-0010

12378

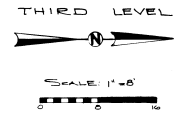
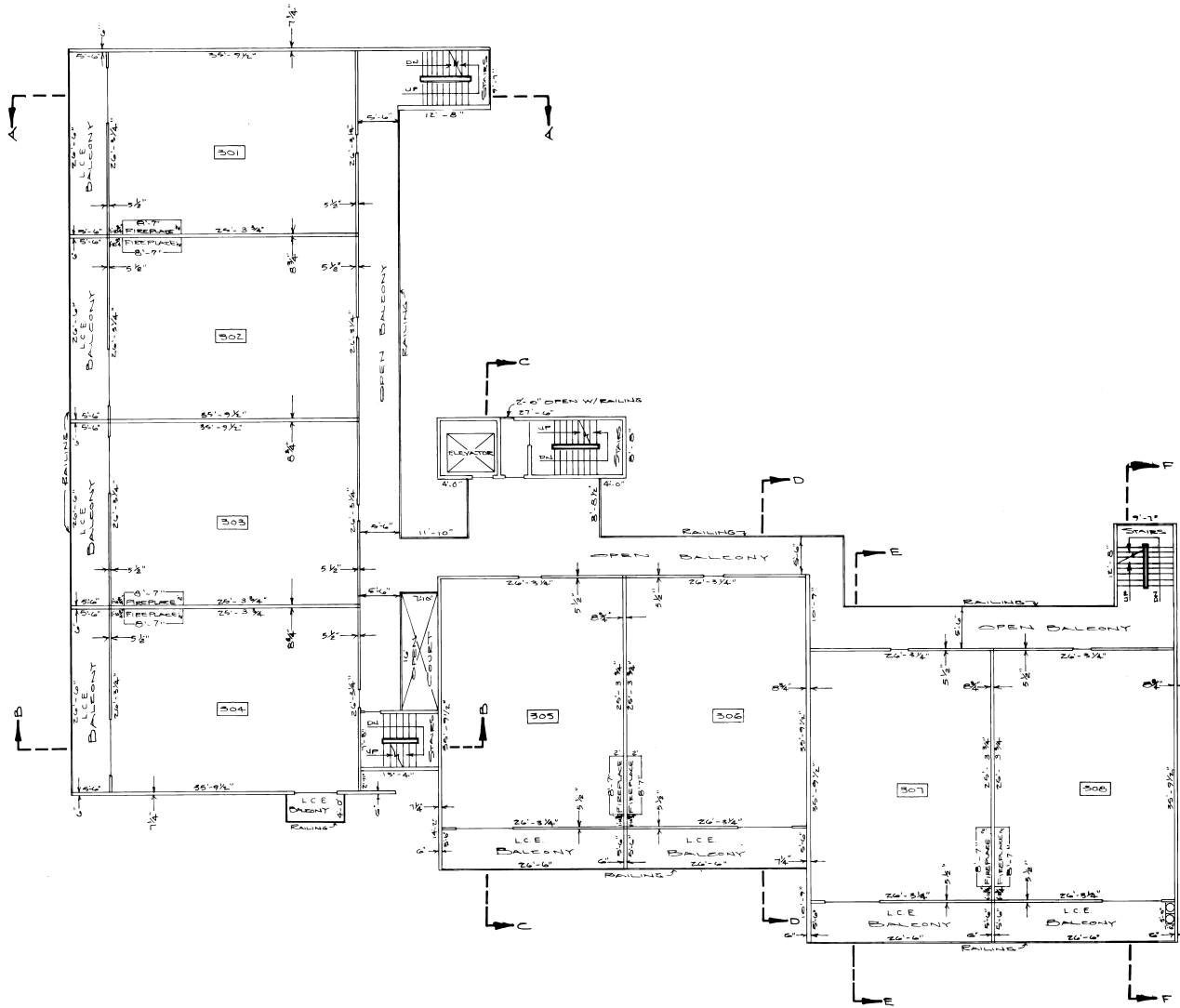
CONDOMINIUM MAP OF
VANTAGE POINT - VAIL CONDOMINIUMS
 VAIL / LIONSHEAD COLORADO



Wm. H. Burgwin & Associate Inc. 720 Delaware Street Denver, Colorado 80204	
SCALE: 1/8" = 1'-0"	SHEET NUMBER 2 OF 10
DATE: 11/17/78	DRAWN BY: D.E.C.
VANTAGE POINT - VAIL CONDOMINIUMS VAIL / LIONSHEAD COLORADO	
CONDOMINIUM MAP	DRAWING NUMBER 70243

1232/E

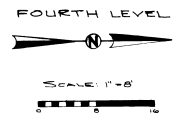
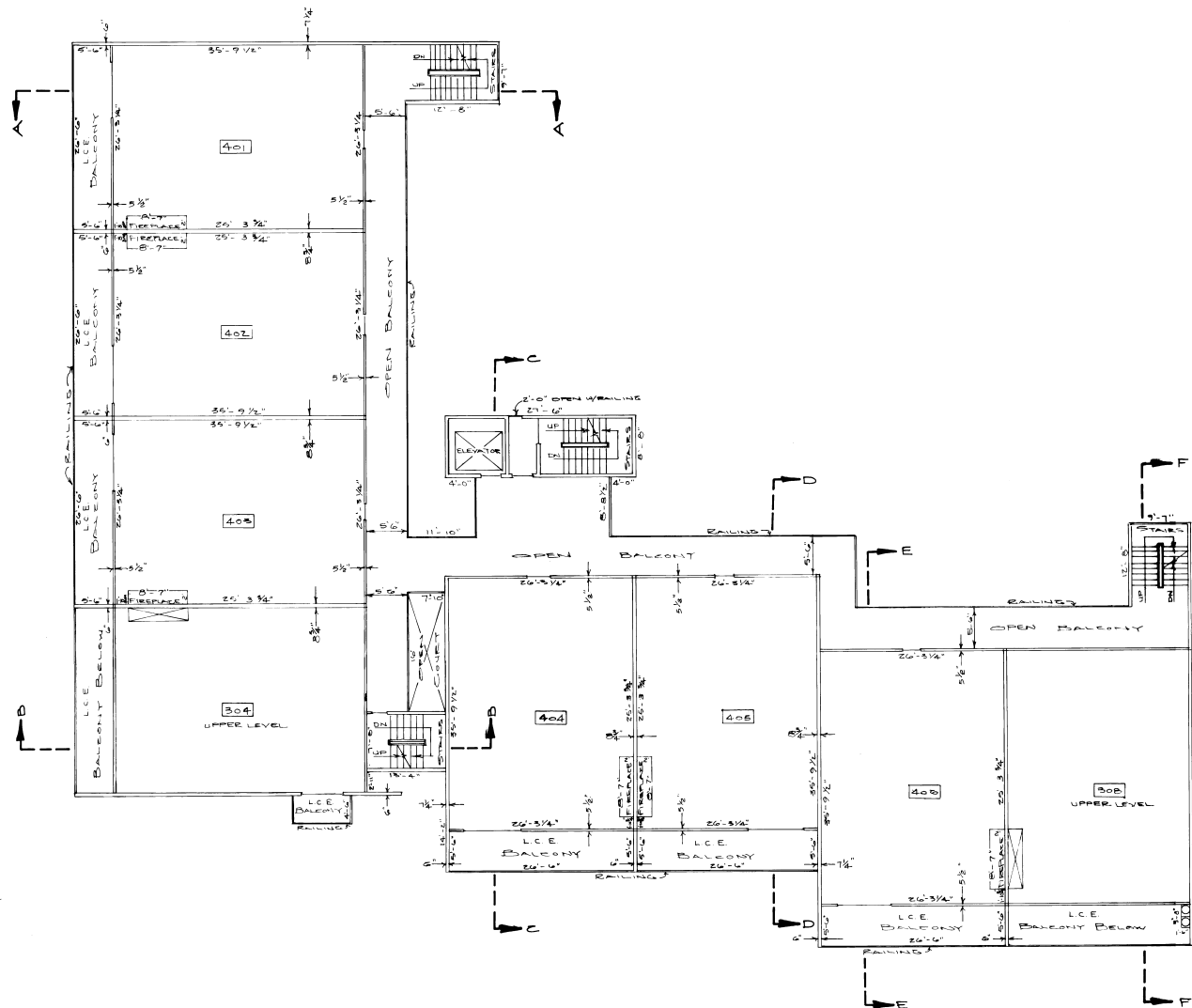
CONDOMINIUM MAP OF
VANTAGE POINT - VAIL CONDOMINIUMS
 VAIL / LIONSHEAD COLORADO



Wm. H. Burgwin & Associate Inc.		
723 Delaware Street Denver, Colorado 80204		
SCALE 1"=8'	SHEET NUMBER 50410	DRAWN BY E.S.
DATE 1-11-75	CHECKED BY	
VANTAGE POINT-VAIL CONDOMINIUMS VAIL/LIONSHEAD COLORADO		
CONDOMINIUM MAP		DRAWING NUMBER 70243

123218

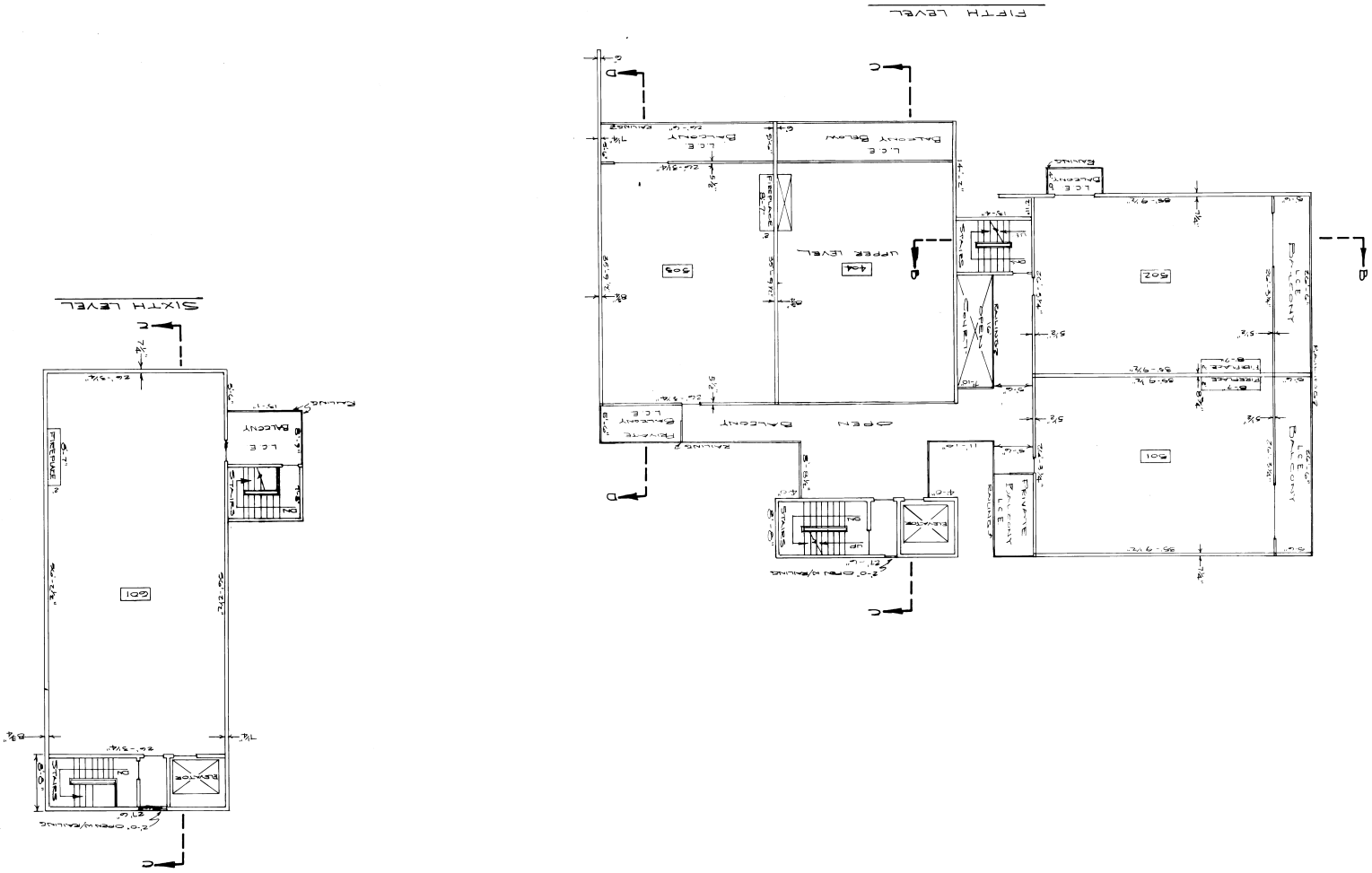
CONDOMINIUM MAP OF
VANTAGE POINT - VAIL CONDOMINIUMS
 VAIL / LIONSHEAD COLORADO



Wm. H. Burgwin & Associate Inc.	
723 Delaware Street Denver, Colorado 80204	
SCALE: 1" = 8'	SHEET NUMBER 2 OF 10
DATE: 11/13	DRAWN BY: G.E.S.
VANTAGE POINT-VAIL CONDOMINIUMS	
VAIL/LIONSHEAD COLORADO	
CONDOMINIUM MAP	DRAWING NUMBER: 70243

123218

CONDOMINIUM MAP OF
VANTAGE POINT - VAIL CONDOMINIUMS
 VAIL / LIONSHEAD COLORADO



10378

Wm. H. Burgwin & Associate Inc.
 753 Denver Street Denver, Colorado 80202
 Scale: 1/8" = 1'-0"
 Date: 11-11-78
 Description: Sweet Home, 10' x 10' x 10'
 Vantage Point - Vail Condominiums
 Vail / Lionshead Colorado
 Condominium Map 70245

