

LAND SURVEY PLAT

A PART OF TRACTS A, B, AND C, ALL OF TRACT D
AND LOT 4, BLOCK 1 VAIL/LIONSHED FIRST FILING,
A PART OF LOT 1, BLOCK 1, TRACT B, ALL OF LOT 2, BLOCK 1
A PORTION OF TRACT C, TRACT G AND H VAIL/LIONSHED THIRD FILING
SECTIONS 6 AND 7, TOWNSHIP 5 SOUTH, RANGE 80 WEST OF THE 6th P.M.
TOWN OF VAIL, COUNTY OF EAGLE, STATE OF COLORADO

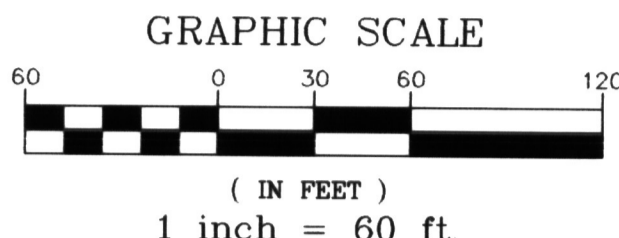
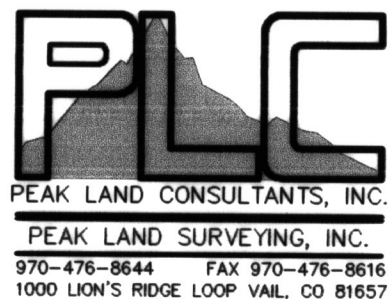
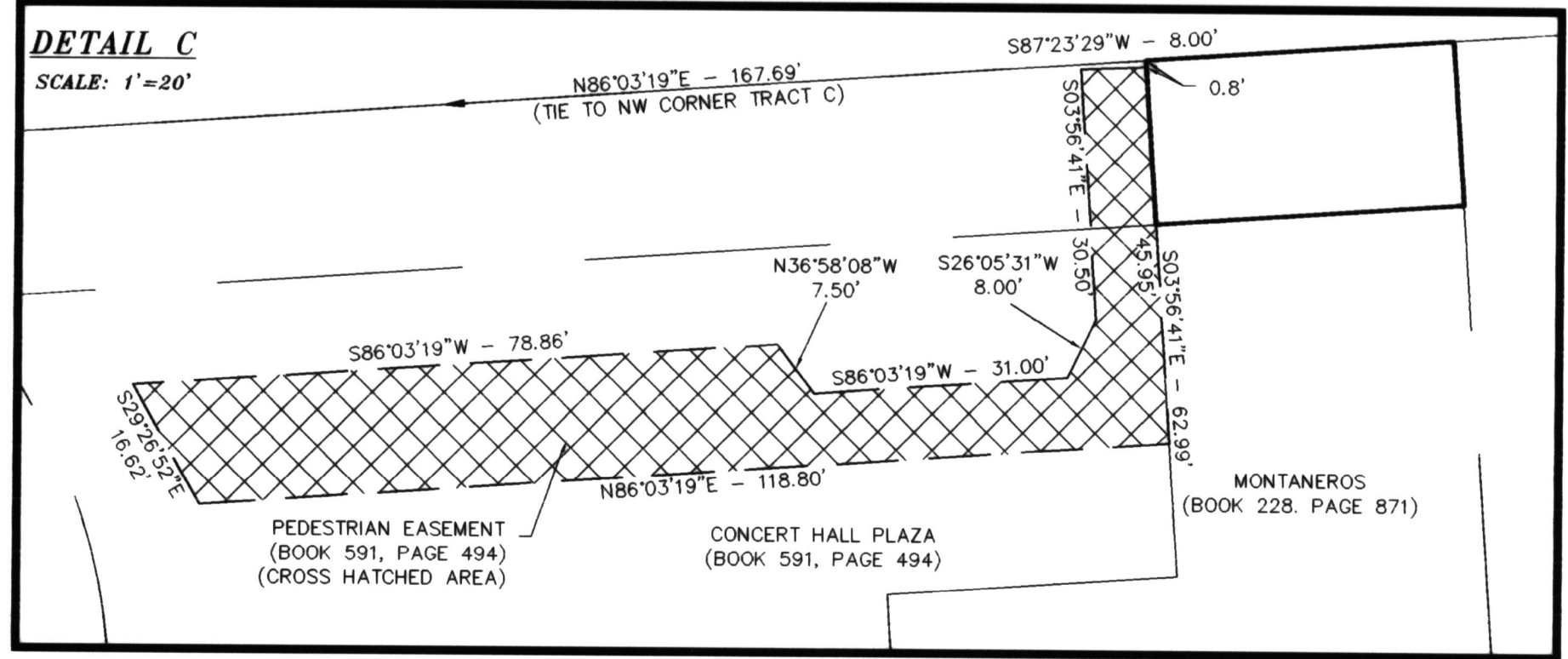
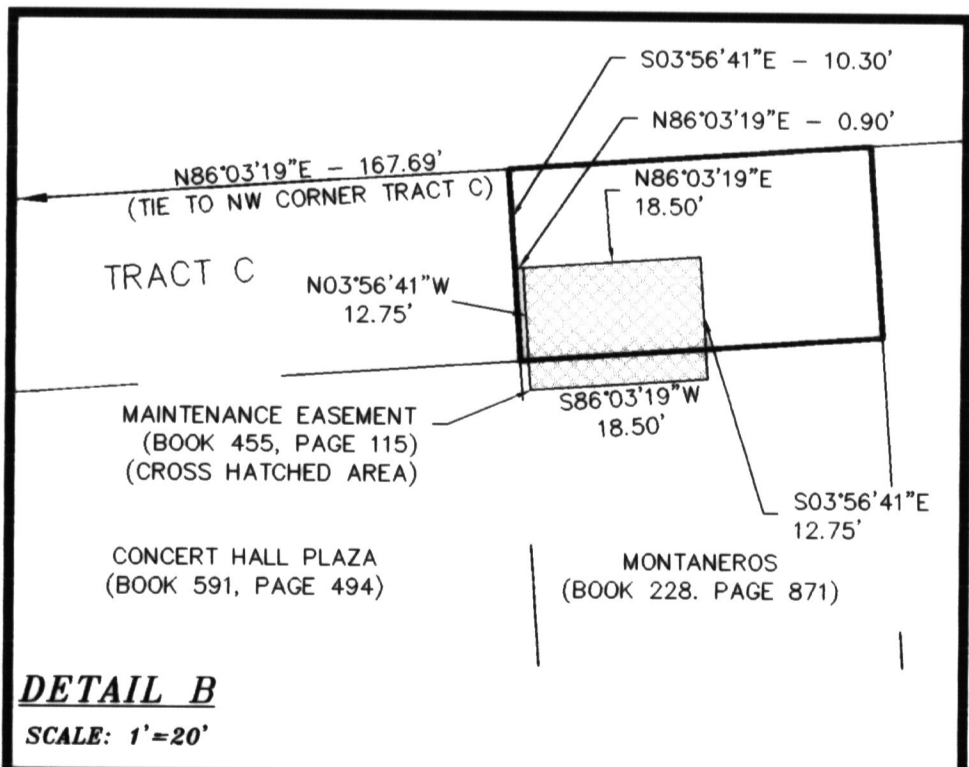
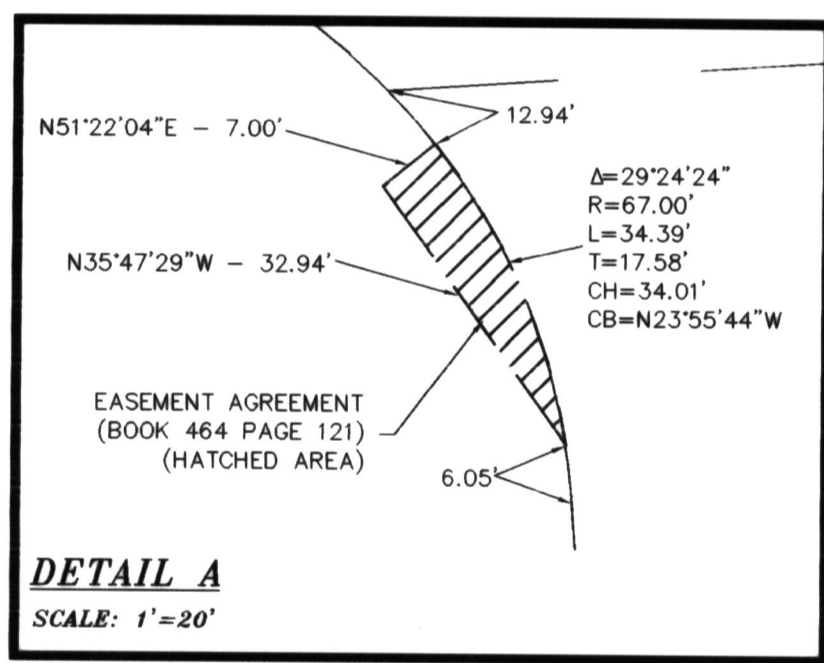
MONUMENT LEGEND

- FOUND No. 5 REBAR WITH ALUMINUM CAP, L.S. No. 27598
- FOUND No. 5 REBAR WITH YELLOW PLASTIC CAP, L.S. No. 27598
- ⊙ SET No. 5 REBAR WITH ALUMINUM CAP, L.S. No. 27598
- ⊙ SET MAGNETIC NAIL WITH WASHER IN CONCRETE, L.S. No. 27598

Ⓐ INDICATES SYMBOL FOR PARCEL DESCRIPTION

CURVE	DELTA	RADIUS	LENGTH	TANGENT	CHORD	CHORD BEARING
C1	44°35'09"	59.82'	46.55'	24.53'	45.38'	S55°18'44"E
C2	32°37'32"	60.00'	34.16'	17.56'	33.71'	N29°36'50"W
C3	4°45'59"	67.00'	5.57'	2.79'	5.57'	N47°21'58"W
C4	03°04'13"	3650.00'	195.59'	97.82'	195.56'	N75°29'37"E
C5	12°59'22"	3650.00'	39.67'	19.92'	39.59'	N07°52'22"W
C6	00°23'53"	3650.00'	23.35'	12.68'	23.35'	S71°33'59"W
[C6]	00°23'53"	3650.00'		25.29'	576.38'56"W	

LINE	LENGTH	BEARING	LINE	LENGTH	BEARING
L1	225.50'	N86°03'19"E	L46	85.83'	S45°25'25"E
L2	79.58'	S03°56'41"E	L47	50.00'	N88°12'48"E
L3	167.91'	[170.00']	L48	32.50'	S01°27'12"E
L4	422.98'	N04°05'53"W	L49	217.40'	S87°21'48"W
L5	91.14'	[91.00']	L50	5.00'	S02°38'12"E
L6	136.78'	[137.00']	L51	120.00'	S87°21'48"W
L7	73.92'	S49°05'53"E	L52	154.36'	N04°05'53"W
L8	80.00'	N85°54'07"E	L53	130.48'	N121°31'18"W
L9	20.00'	N04°05'53"W	L54	201.88'	N85°54'07"E
L10	70.00'	N85°54'07"E	L55	190.90'	N04°05'53"W
L11	55.00'	S04°05'53"E	L56	12.06'	N85°54'07"E
L12	35.00'	S85°54'07"W	L57	59.15'	N04°05'53"W
L13	45.00'	S04°05'53"E	L58	249.96'	S85°54'07"W
L14	52.32'	S49°05'53"E	L59	52.02'	N44°20'04"W
L15	109.50'	N85°54'07"E	L60	61.89'	[62.00']
L16	77.00'	N04°05'53"W	L61	231.60'	[232.45']
L17	72.50'	N85°54'07"E	L62	12.96'	S87°30'19"W
L18	47.50'	N04°05'53"W	L63	16.48'	N87°30'19"E
L19	22.50'	N85°54'07"E	L64	249.92'	N44°25'19"E
L20	45.69'	S77°36'19"E	L65	42.06'	S01°14'26"E
L21	60.92'	S08°42'58"W	L66	45.26'	[47.04']
L22	88.50'	S85°54'07"E	L67	102.84'	N04°05'53"W
L23	8.00'	N04°05'53"W	L68	33.87'	N26°35'53"W
L24	35.95'	S85°54'07"W	L69	38.47'	N04°05'53"W
L25	61.20'	S04°35'53"E	L70	45.49'	N29°14'35"E
L26	216.90'	S85°54'07"W	L71	122.97'	[125.00']
L27	116.30'	S04°05'53"E	L72	45.00'	S86°03'19"W
L28	275.75'	N85°54'07"E	L73	45.00'	S86°03'19"W
L29	29.62'	[29.54']	L74	218.21'	S03°56'41"E
L30	444.20'	S85°54'07"W	L75	360.64'	N03°56'41"W
L31	261.78'	S04°05'53"E	L76	185.31'	S86°03'19"W
L32	401.79'	S64°36'10"W	L77	22.81'	N49°44'58"W
L33	128.90'	S28°42'55"W	L78	101.50'	[104.76']
L34	34.95'	N70°14'32"W	L79	130.28'	N04°05'53"W
L35	100.50'	N17°40'35"E	L80	57.03'	[56.62']
L36	153.50'	N11°32'35"E	L81	70.62'	[70.06']
L37	89.00'	N55°04'05"E	L82	14.00'	N01°29'41"W
L38	158.00'	S77°43'25"E	L83	16.00'	N85°40'33"E
L39	59.50'	N84°05'05"E	L84	20.00'	N04°19'27"W
L40	211.66'	N46°52'35"E	L85	75.02'	N04°19'27"W
L41	73.88'	N04°05'53"E	L86	57.18'	S87°21'48"W
L42	87.00'	S40°09'05"W	L87	71.00'	N02°38'12"W
L43	70.51'	N04°05'53"W	L88	24.00'	S87°21'48"W
L44	137.96'	N54°07'02"E	L89	32.00'	N02°38'12"W
L45	125.51'	S68°33'27"E			



UNPLATTED TOWN OF VAIL
(RECEPTION No. 720888)

DEPOSITED THIS 11TH DAY OF DECEMBER 2002 AT 11:00 AM IN BOOK 1 OF THE EAGLE COUNTY SURVEYOR'S LAND SURVEY PLAT/RIGHTS-OF-WAY SURVEYS AT PAGE 509. RECEPTION No. 509

11/17/02
BRENT BROWN
27598